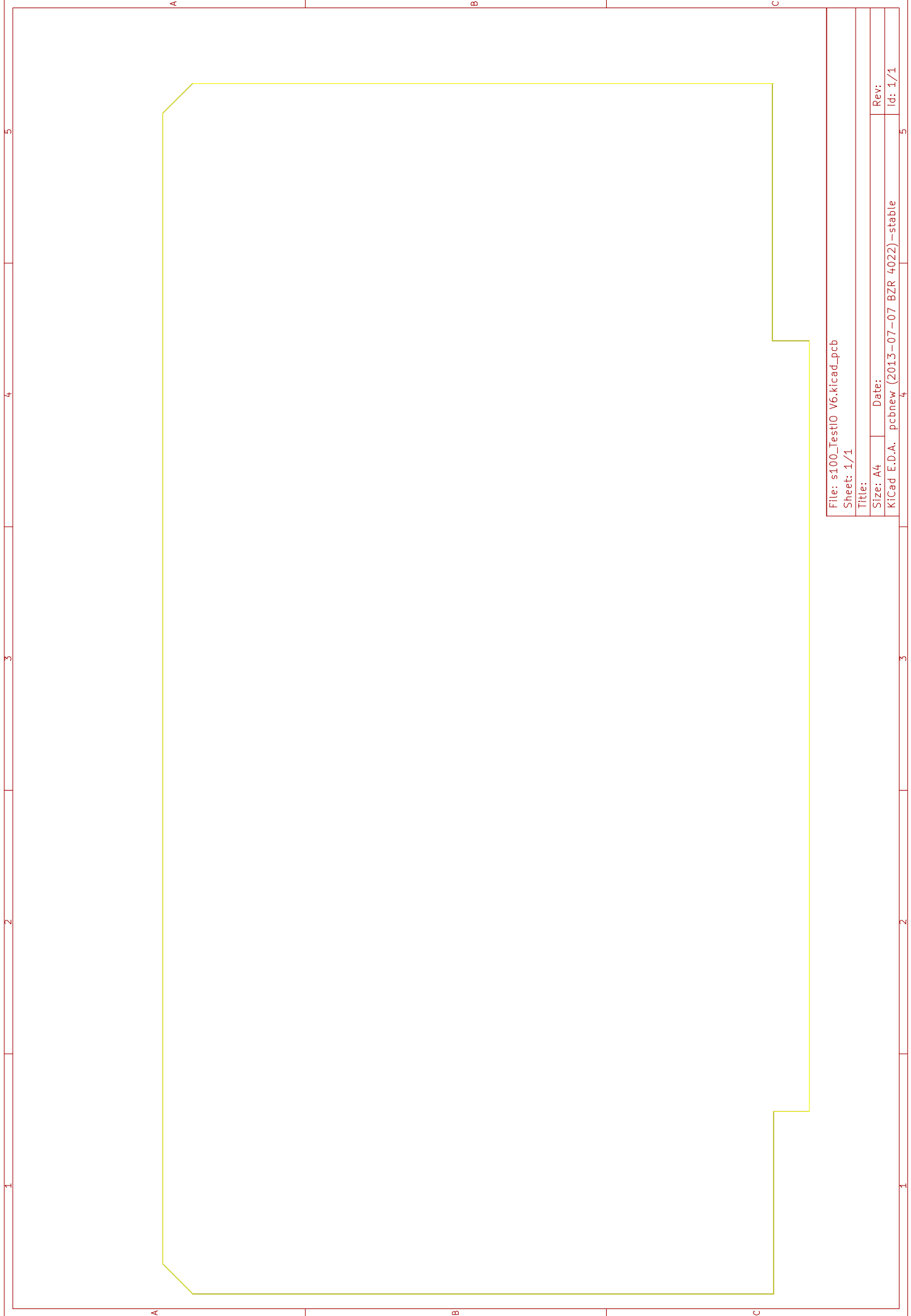


JM (11 Oct 2014)

S100Computers.com & NBVEM S-100 Bus to ISA Adaptor board V6.0

File: s100_TestIO V6.kicad_pcb
 Sheet: 1/1
 Title:
 Size: A4 Date:
 KiCad E.D.A. pcbnew (2013-07-07 BZR 4022) -stable

Rev: 1/1
 Id: 1/1



File: s100_TestIO_V6.kicad_pcb
Sheet: 1/1

Title:

Size: A4 Date:

Kicad E.D.A. pcbnew (2013-07-07 BZR 4022) -stable

Rev:

Id: 1/1