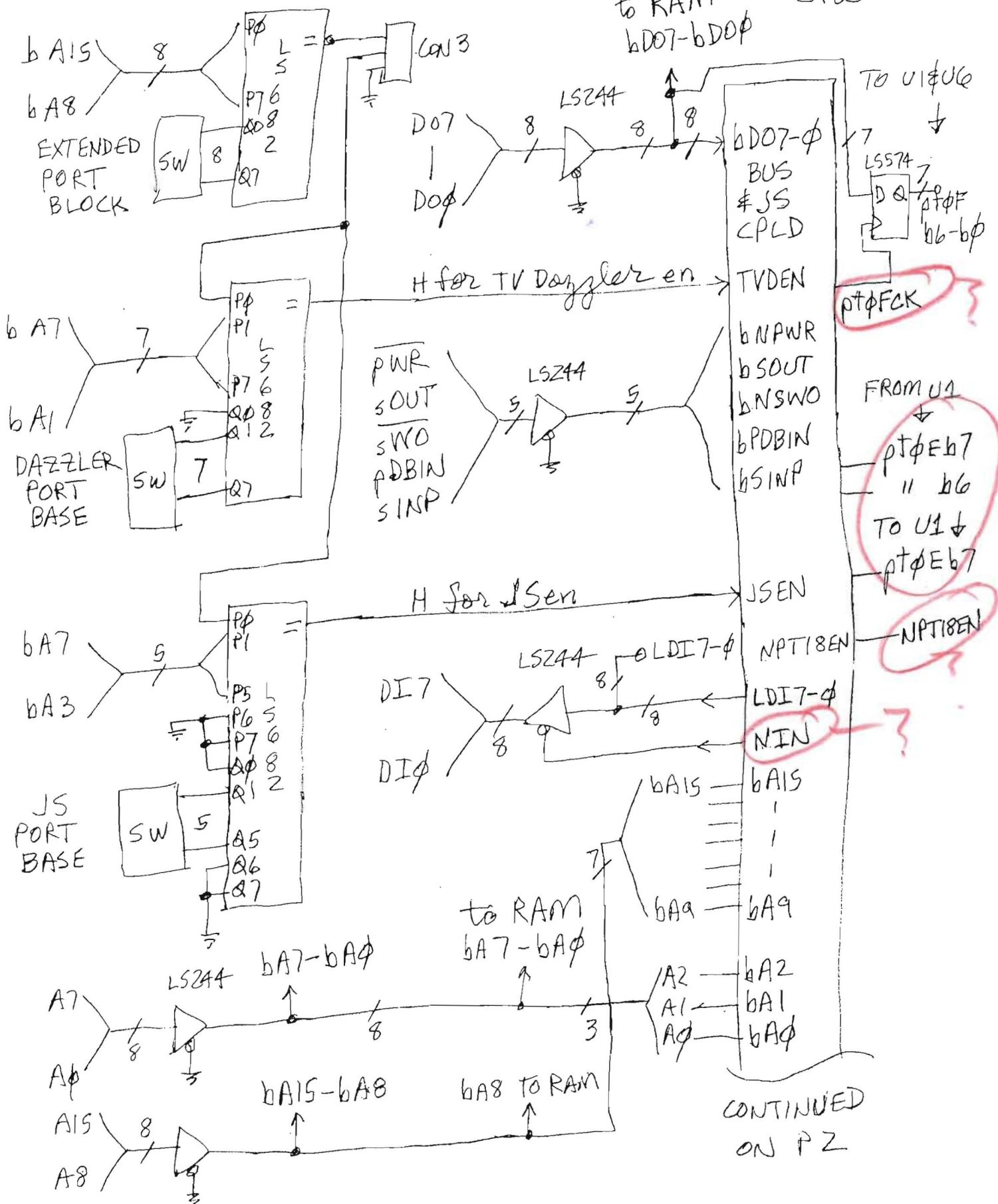


TV Dazzler II Combo Board Bus Logic

3/8/16 1/4
JTW

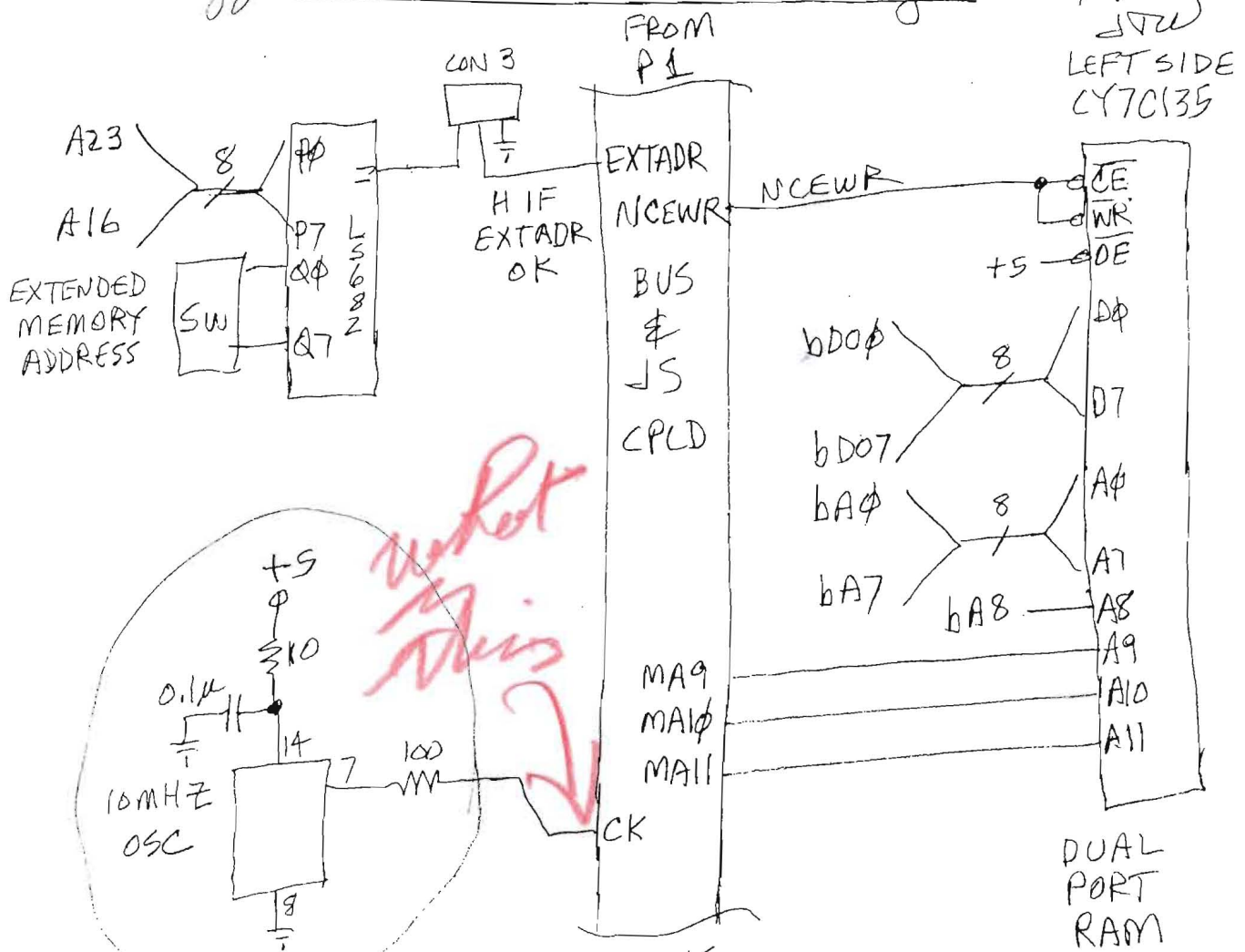


TV Dazzler II Combo Board Bus Logic

CBCL2

3/8/16

2/4



we could use instead a connection to the CK8 (8.18MHz) oscillator output of the Dazzler video CPLD if it is not too long. (i.e. < 3ins)

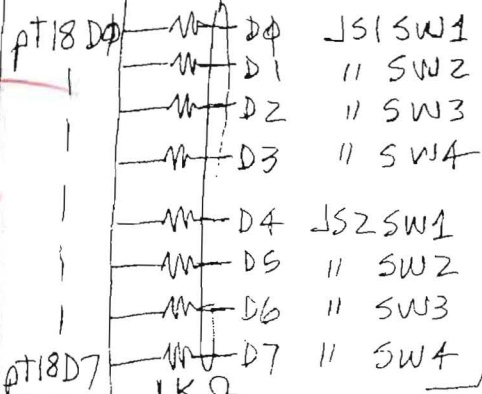
TO JS INTERFACE

CBL3

T.V Dazzler Combo Board Joystick Interface

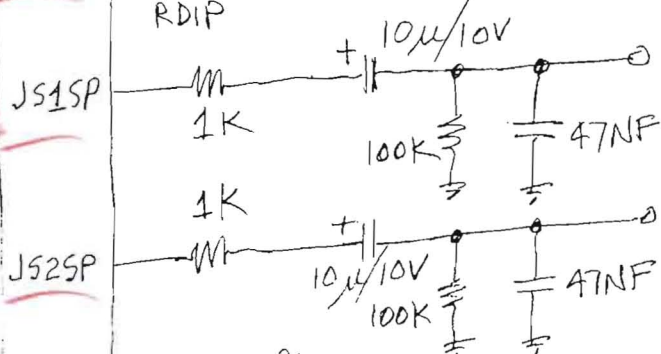
3/8/16 3/4
JW

RSIP FROM PZ Provide on-board 10K pullups to +5 on connector side



3/9 move to external buffer 74LS244 controlled by NPT18EN omit 1K series resistor See page 4 & 1

Speaker outputs use a PWM DAC in the CPLD

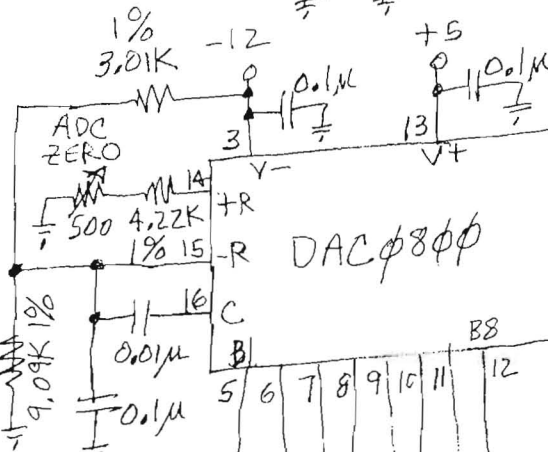


100HZ → 4KHZ BW ±2.5V IN DC

Joystick Connections

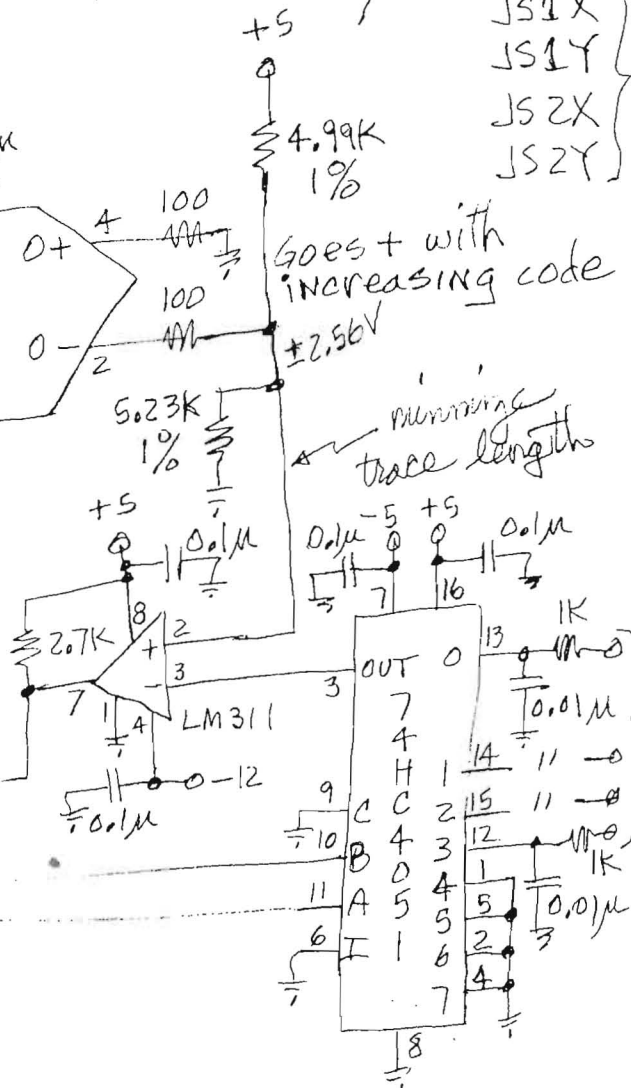
JS1X
JS1Y
JS2X
JS2Y

BUS & JS CPLD



DAC1
DAC2
DAC3
DAC4
DAC5
DAC6
DAC7
DAC8
COMP

SELB
SELA

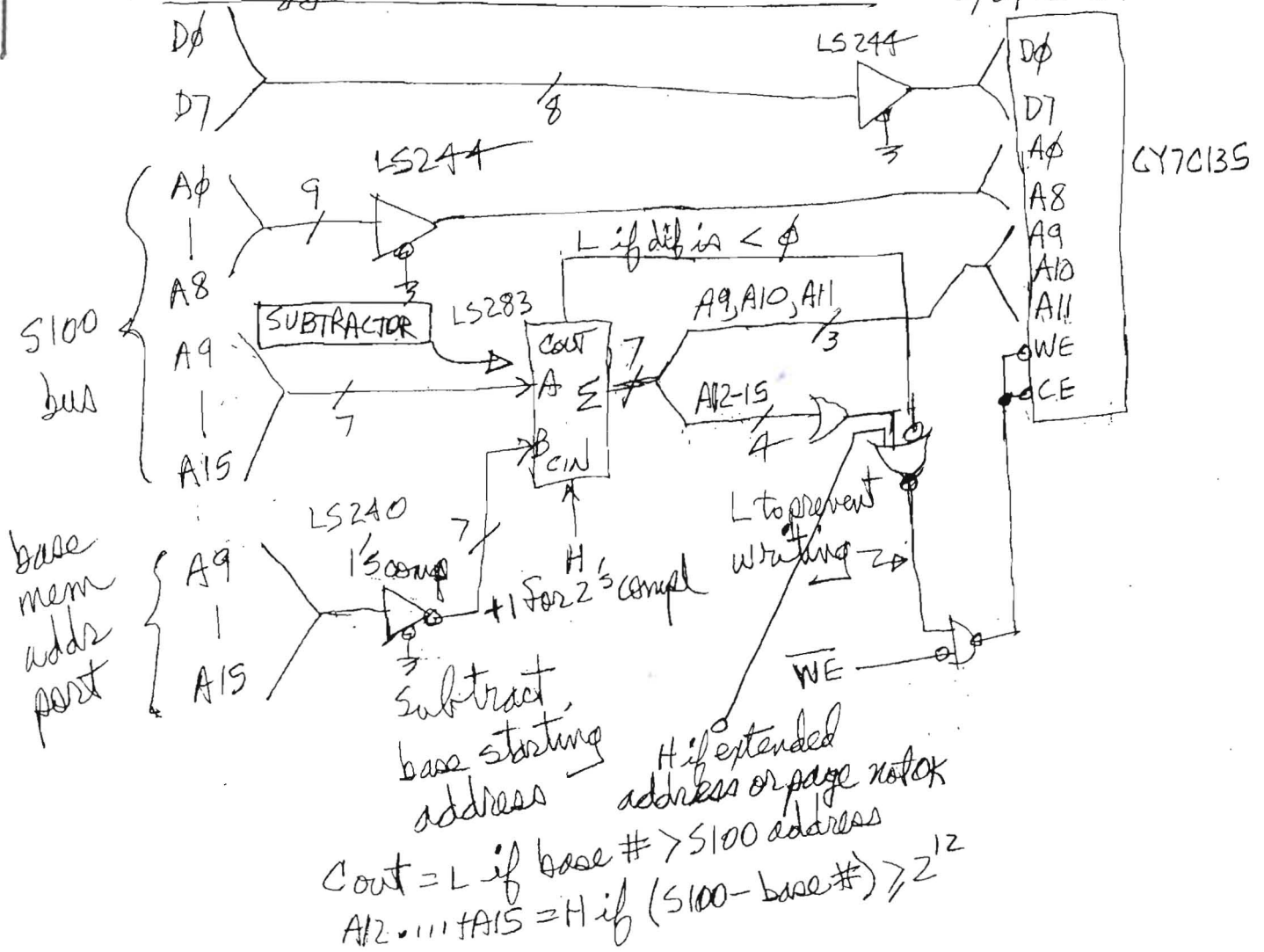


Goes + with increasing code

minimizing trace lengths

TV Dazzler II Bus Address Selector

3/6/16 JTW



*Is this within
a CPLD or do
we need to do it
in hardware*