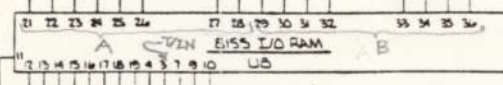
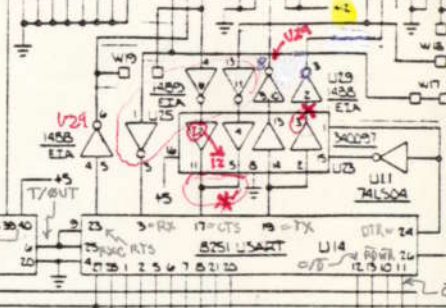
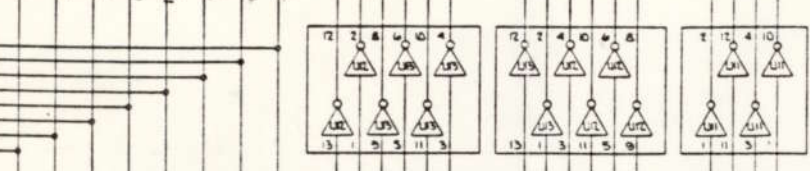
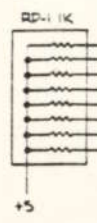
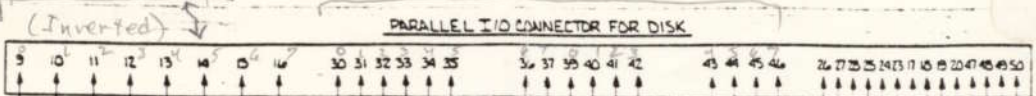
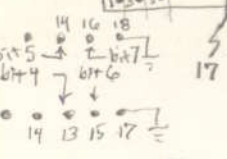


Connect ON CPU

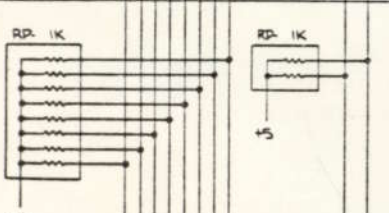
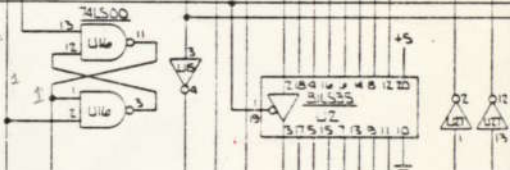
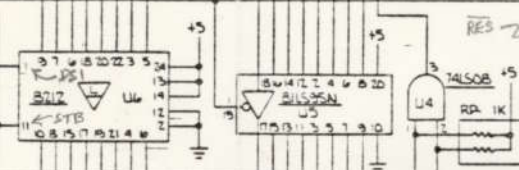
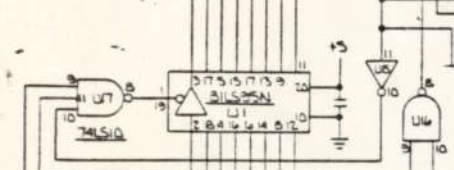
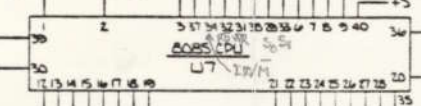
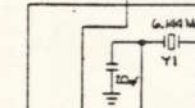
Latched/Inverted

TX CRT RX Carrier
RX CRT RX Carrier
RX CRT RX Carrier



- AD-8
- AD-1
- AD-2
- AD-3
- AD-4
- AD-5
- AD-6
- AD-7
- RESET
- CLK
- 12V
- NR

PART D



DATA INPUT
0 1 2 3 4 5 6 7

ADDRESS
0 1 2 3 4 5 6 7

ADDRESS
0 1 2 3 4 5 6 7

READY
0 1 2 3 4 5 6 7

DATA OUTPUT
0 1 2 3 4 5 6 7

INTERRUPT
0 1 2 3 4 5 6 7

Norm 1
W9
W8
W7

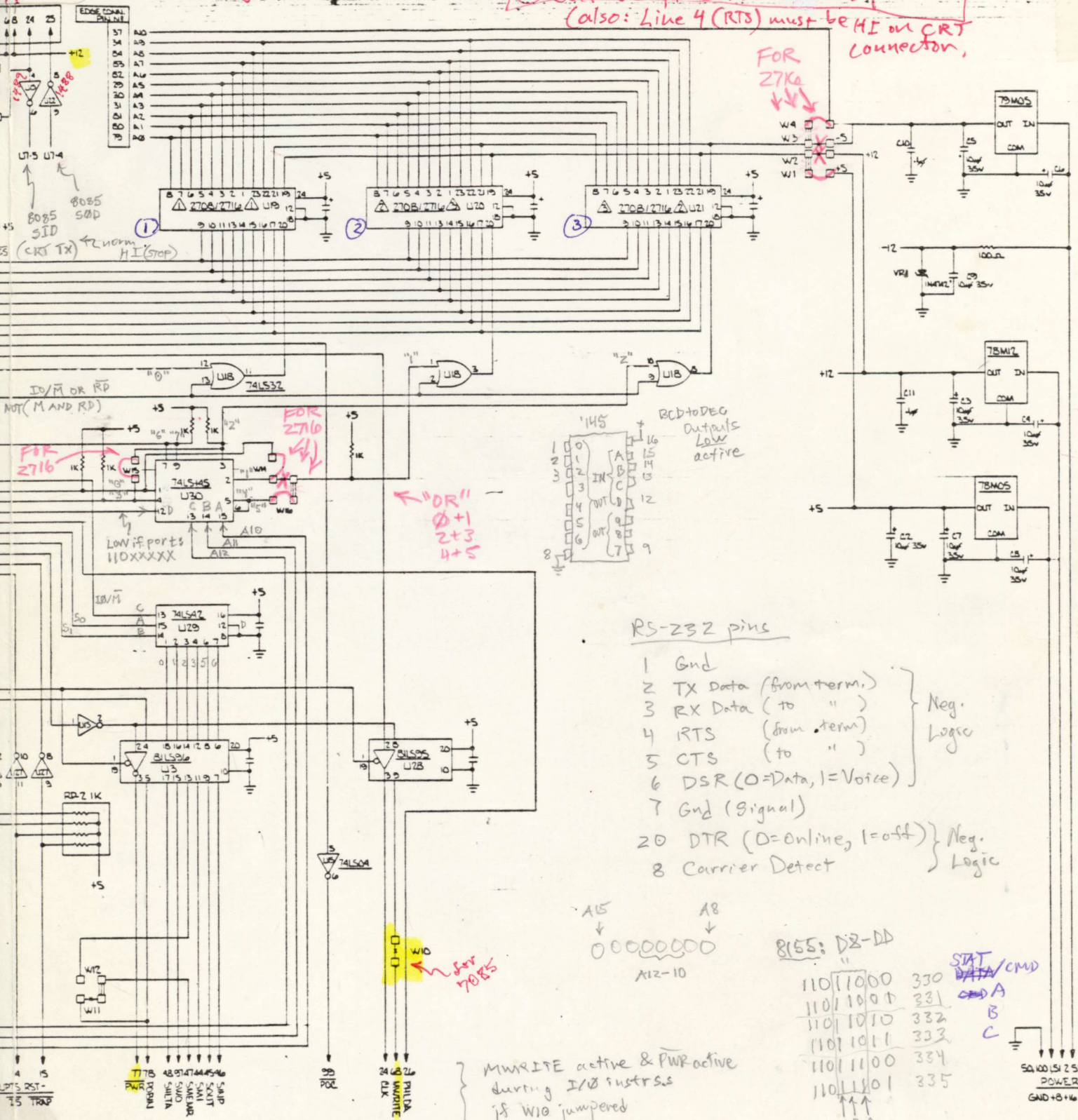
U25 pin 11 is Hi when B3 floating

4.5.6
U22

To use PRINTER connector

* Pin 11 overrides pin 5 (As if 5 not connected)

② U29 pin 2 → U29 pin 9 (210)
① Cut U29 pin 2 → U23 pin 3 (also: Line 4 (RTS) must be HI on CRT connector)



RS-232 pins

- 1 Gnd
 - 2 TX Data (from term.)
 - 3 RX Data (to ")
 - 4 RTS (from term.)
 - 5 CTS (to ")
 - 6 DSR (0=Data, 1=Voice)
 - 7 Gnd (Signal)
 - 20 DTR (0=online, 1=off)
 - 8 Carrier Detect
- } Neg. Logic

A5
A8
00000000
A12-10

855: D8-DD

110	1000	330	STAT DATA/cmd cmd A B C
110	1001	331	
110	1010	332	
110	1011	333	
110	1100	334	
110	1101	335	

CBA
↑↑↑
"0"

MMWRITE active & PWR active during I/O instrs is WIO jumpered

PS = 69
not used by CPU

0110

Inp. Port : CC
11001100
CBA
"3"

8251: CO-C1
1100 0000 = 300
1100 0001 = 301
CBA
"0"

W5: CO0qstart (pg 300B) 340
W6: E000

MMWRITE ~ PWR

1101
1101
1100
↑
A13

50 100 151 252
POWER
GND+B+16-16

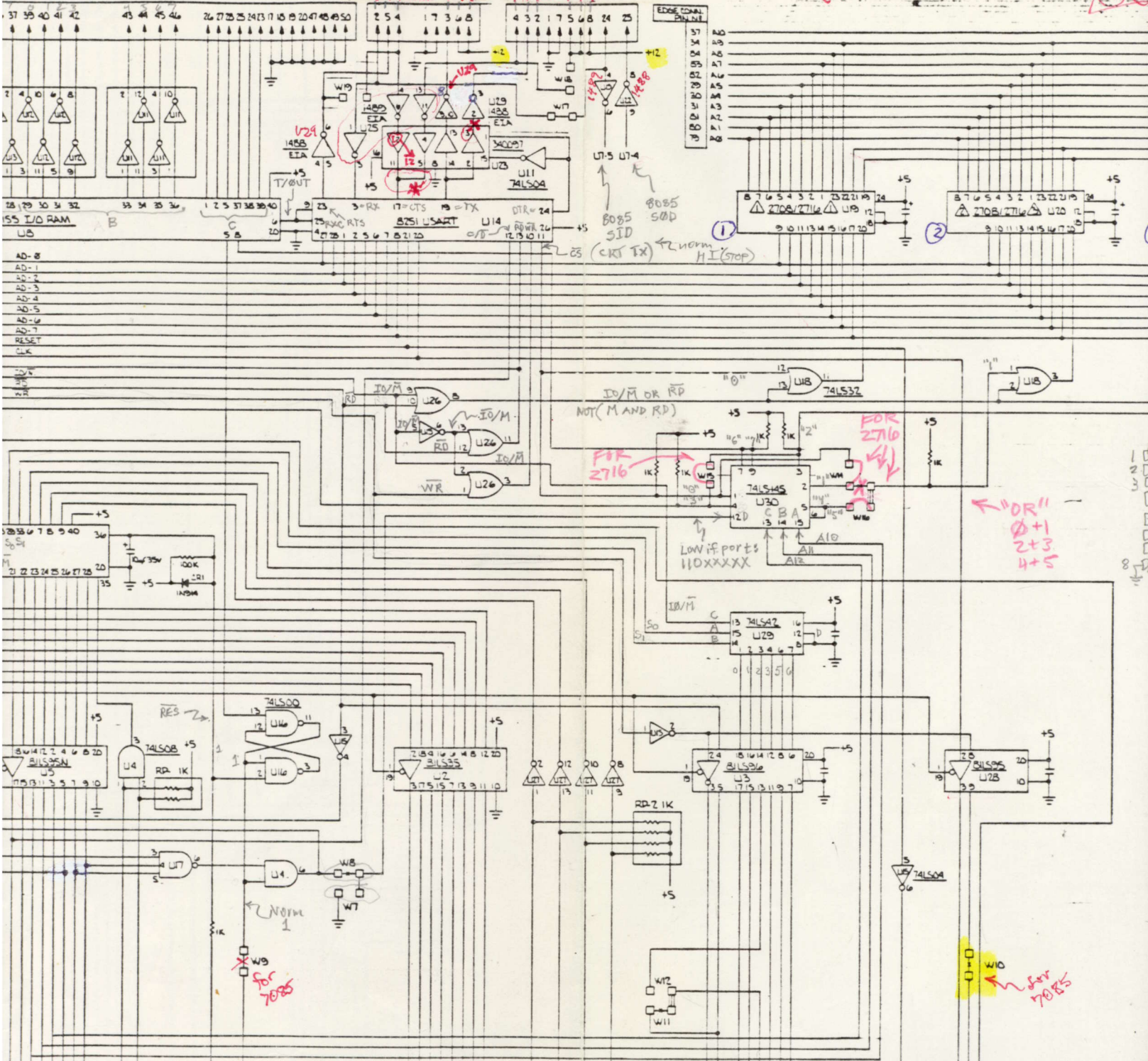
U25 pin 11 is Hi when B3 floating

d/Invented

* Pin 11 overrides pin 5 (As if 5 not connected)

② U20
① C...

CONNECTOR FOR DISK



84 83 82 81 80 79 78 77 76 75 74 73 72 71 70 69 68 67 66 65 64 63 62 61 60 59 58 57 56 55 54 53 52 51 50
 ADDRESS
 3 72
 READY
 75 67
 RESET PHANTOM
 36 35 34 33 32 31 30 29 28 27 26 25 24 23 22 21 20 19 18 17 16 15 14 13 12 11 10 9 8 7 6 5 4 3 2 1 0
 DATA OUTPUT
 12 13 14 15
 INTERRUPT'S RST -
 65 64 63 62 61 60 59 58 57 56 55 54 53 52 51 50
 TRAP
 77 78 79 80 81 82 83 84 85 86 87 88 89 90 91 92 93 94 95 96 97 98 99 100
 PWR
 ADDR
 SAMP
 SOUT
 SINT
 SERR
 SERRA
 SERRB
 SERRC
 SERRD
 SERRA
 SERRB
 SERRC
 SERRD
 88 89 90
 PWR
 79 80 81 82 83 84 85 86 87 88 89 90
 PWR
 79 80 81 82 83 84 85 86 87 88 89 90
 PWR

NOTE
 DTR set low
 disables U23?
 (rather than
 driving pin 20
 of PRS-230)

W5: C000 start (page 300B)
 W6: E000 340

MMKSTE = ~PWR

1101
 1101
 1101
 A13

MMKSTE a
 during I/O
 if WIO jump